

**COMANDO A PARETE  
WALL CONTROL  
COMMANDE MURALE**

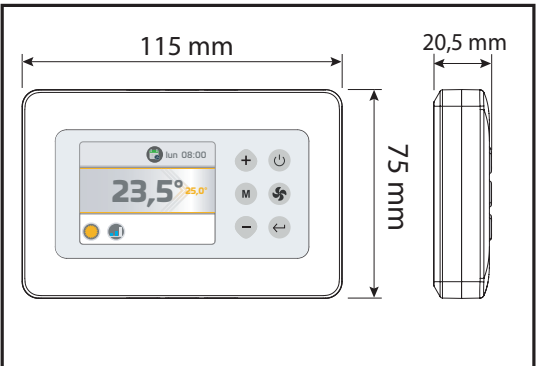
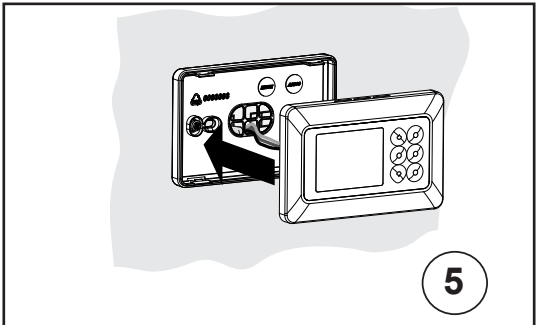
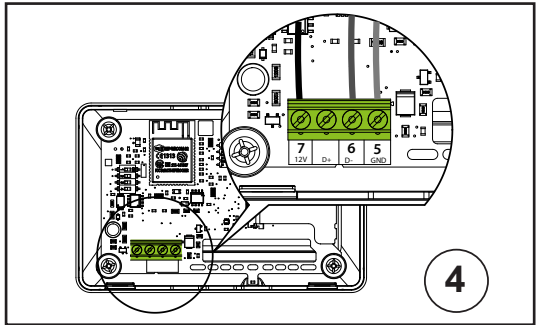
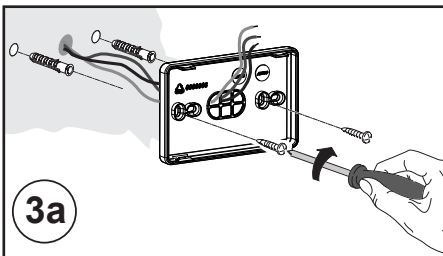
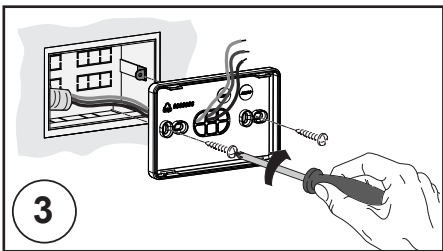
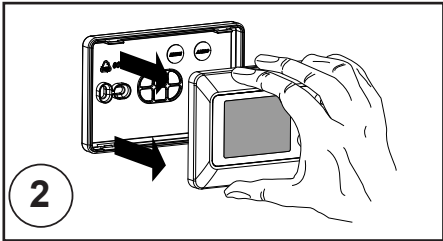
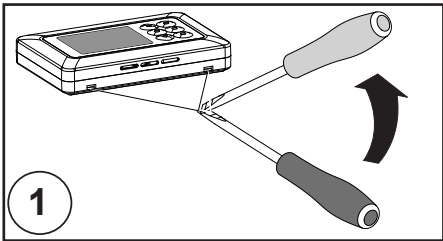
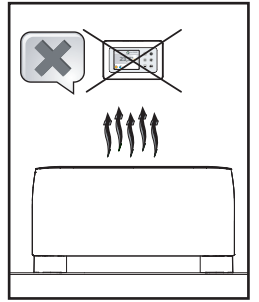
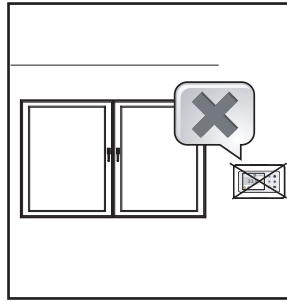
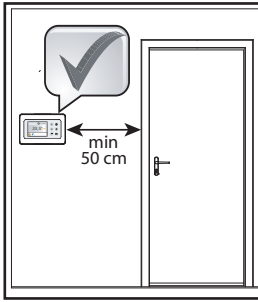
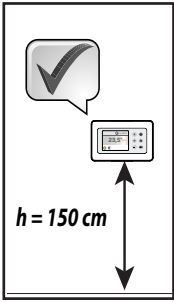
**T-MB2**  
**9066994E**  
**9066994ESW**



**MANUALE DI INSTALLAZIONE, USO E MANUTENZIONE**  
**INSTALLATION, USE AND MAINTENANCE MANUAL**  
**MANUEL D'INSTALLATION, D'UTILISATION ET D'ENTRETIEN**



07/2024  
Cod. 4050329



## COLLEGAMENTI ELETTRICI DEL COMANDO

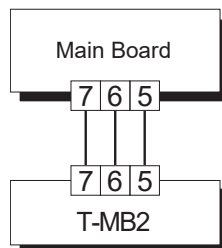
Il pannello comandi deve essere collegato elettricamente alla scheda di potenza posta all'interno dell'apparecchiatura elettrica dell'unità rispettando la corrispondenza della numerazione comune ad entrambe le schede.

Utilizzare 3 conduttori con sezione 0,5 mm<sup>2</sup>.

NOTA: La lunghezza del cavo di collegamento non deve essere superiore ai 20 metri.

**ATTENZIONE: il comando deve essere usato esclusivamente negli abbinamenti alle unità di controllo previsti dal fabbricante e riportati nella documentazione del fabbricante.**

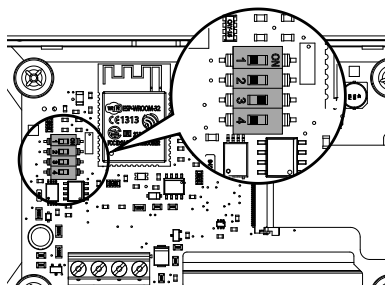
**La conformità del comando alle norme e direttive di sicurezza applicabili è garantita solo ed esclusivamente secondo tali abbinamenti.**



## IMPOSTAZIONE DIP DI CONFIGURAZIONE

### DEFAULT

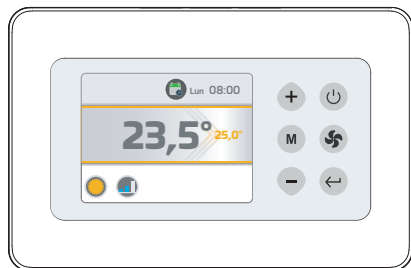
DIP 1 = OFF      DIP 3 = ON  
DIP 2 = OFF      DIP 4 = OFF








| FUNZIONE                    | DIP1 | DIP2 | DIP3 | DIP4 |
|-----------------------------|------|------|------|------|
| T-MB2 - unità con scheda MB | OFF  | OFF  | ON   | OFF  |
| T-MB2 - unità con scheda AU | OFF  | ON   | ON   | OFF  |
| T-MB2 - unità LAMA ARIA     | ON   | OFF  | ON   | OFF  |

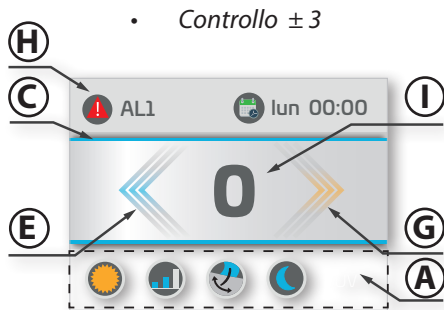
## PANORAMICA COMANDO

### TASTI



-  On/Off (Stand-by)
-  Mode
-  Enter/Return
-  Ventilazione
-  Incremento/Decremento

## DISPLAY



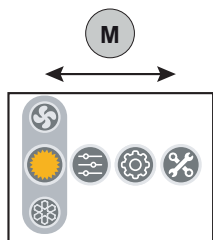
- A. Visualizzazione delle funzioni attive
- B. Temperatura Ambiente
- C. Identificativo modalità:
  - Estate/Raffrescamento = Blu
  - Inverno/Riscaldamento = Arancione

- D. Set modalità Estate
- E. Stato in richiesta modalità Estate
- F. Set modalità Inverno
- G. Stato in richiesta modalità Inverno
- H. Visualizzazione Allarmi
- I. Visualizzazione in versione +/-3 (solo MB)

## ICONE

|  |  |  |   |  |  |
|--|--|--|---|--|--|
|  | Mode Estate - Raffrescamento   |  | Programmazione Timer                          |  | Velocità MINIMA (FAN 3 gradini)  |
|  | Mode Inverno - Riscaldamento   |  | Impostazione Orologio                         |  | Velocità MEDIA (FAN 3 gradini)   |
|  | Mode Automatico  |  | Menù Installatore                             |  | Velocità MASSIMA (FAN 3 gradini)   |
|  | Mode Ventilazione  |  | Informazioni                                  |  | Velocità AUTOMATICA  |
|  | - Menù attivazione Flap Swing<br>- Segnalazione Swing Attivo         |  | Diagnostica<br>Visualizzazione stato          |  | Velocità LINEARE scala 1-10 Volt (se disponibile)                        |
|  | - Menù attivazione IAQ<br>- Segnalazione Filtro IAQ Attivo           |  | Presenza Allarme                              |  | Stand-by   |
|  | - Menù attivazione Night mode<br>- Segnalazione Night mode Attivo    |  | Segnalazione Ciclo Antistratificazione Attivo |  | Menù Lingua  |
|  | - Menù attivazione Timer   |  | Segnalazione Resistenza Attiva                |  | Segnalazione ON/OFF remoto attivato                                      |
|  | - Attivazione Timer 1,2 o 3<br>- Segnalazione Timer Attivo (1,2 o 3) |  | Segnalazione Resistenza Attiva Potenza Max    |  | Segnalazione Contatto Finestra attivato (disponibile solo con schede MB) |
|  | - Attivazione Timer APP<br>- Segnalazione Timer APP Attivo           |  | - Timer non attivo                            |  |  |

## UTILIZZO DEI TASTI PER LA NAVIGAZIONE

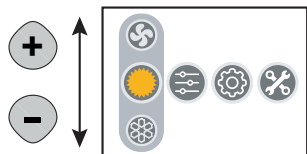


### **Spostamento orizzontale:**

per spostamenti da sinistra a destra

tra i menù utilizzare il tasto **M**.

Ad ogni pressione avviene uno spostamento



### **Spostamento verticale:**

per spostamenti dall'alto al basso

nei menù per la scelta delle funzioni utilizzare i tasti **+** **-**.

Ad ogni pressione avviene uno spostamento

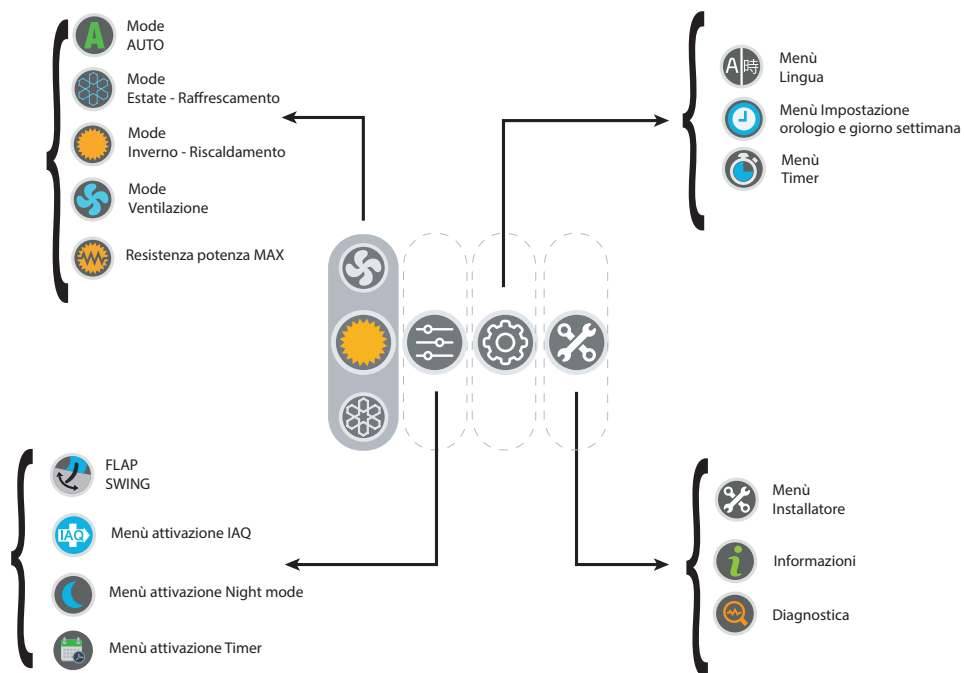
### **Conferma:**



per confermare la scelta del menù o della

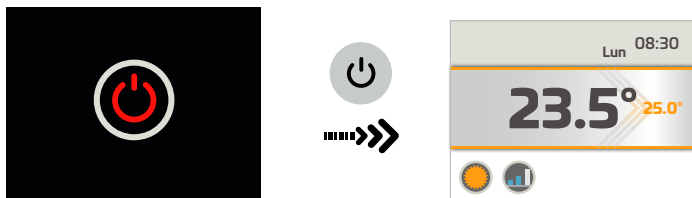
funzione utilizzare il tasto .

## PANORAMICA DEI MENU'

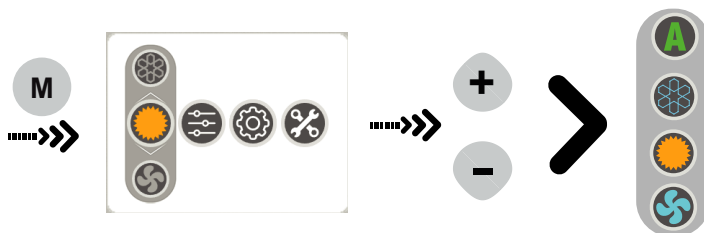


## FUNZIONALITA' PRIMARIE

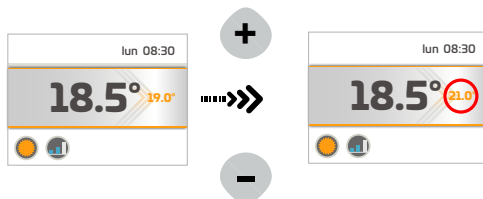
- ON/OFF



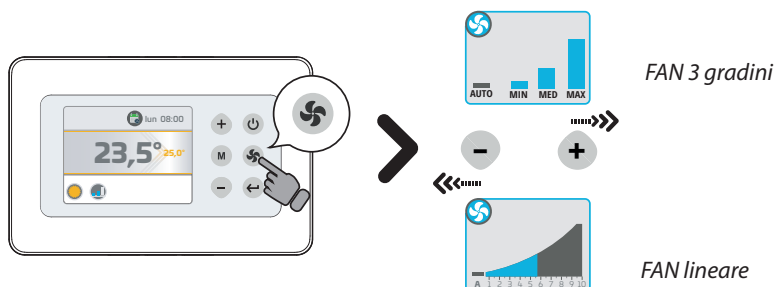
- Impostazione MODE



- Impostazione SET



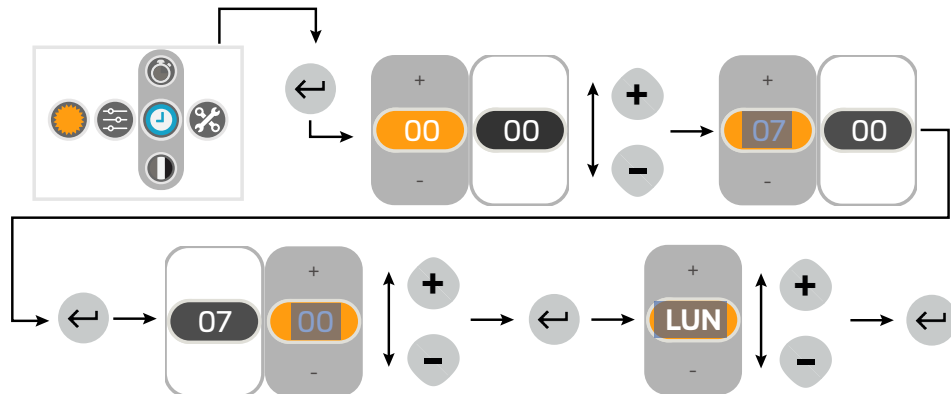
- Impostazione VELOCITA'



**ATTENZIONE!:** dopo un periodo di 60 sec dall'ultima azione la luminosità del display viene ridotta (modalità SLEEPING) e mostrerà solamente il valore la temperatura ambiente rilevato.



## IMPOSTAZIONE OROLOGIO



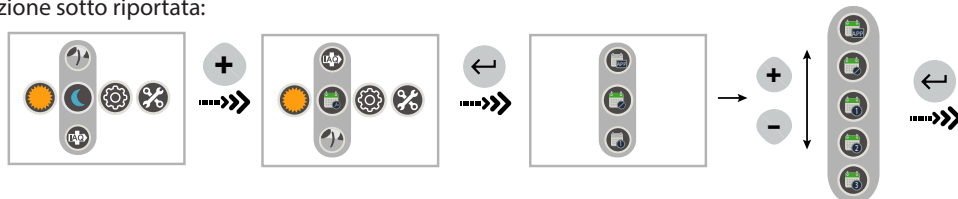
### TIMER - Attivazione

Sono disponibili 4 programmi TIMER attivabili a scelta: TIMER1, TIMER 2, TIMER 3, TIMER APP.

**TIMER 1, TIMER 2, TIMER 3:** destinati ad impostazione sul comando; seguire le istruzioni di seguito riportate per impostazione e attivazione dei 3 programmi.

**TIMER APP:** destinato a registrare il programma TIMER impostato tramite APP ( se disponibile).

Per scegliere quale programma TIMER (precedentemente configurato) attivare, seguire la istruzione sotto riportata:



### TIMER - Configurazione Programma

**Tutti i timer escono da fabbrica non configurati**

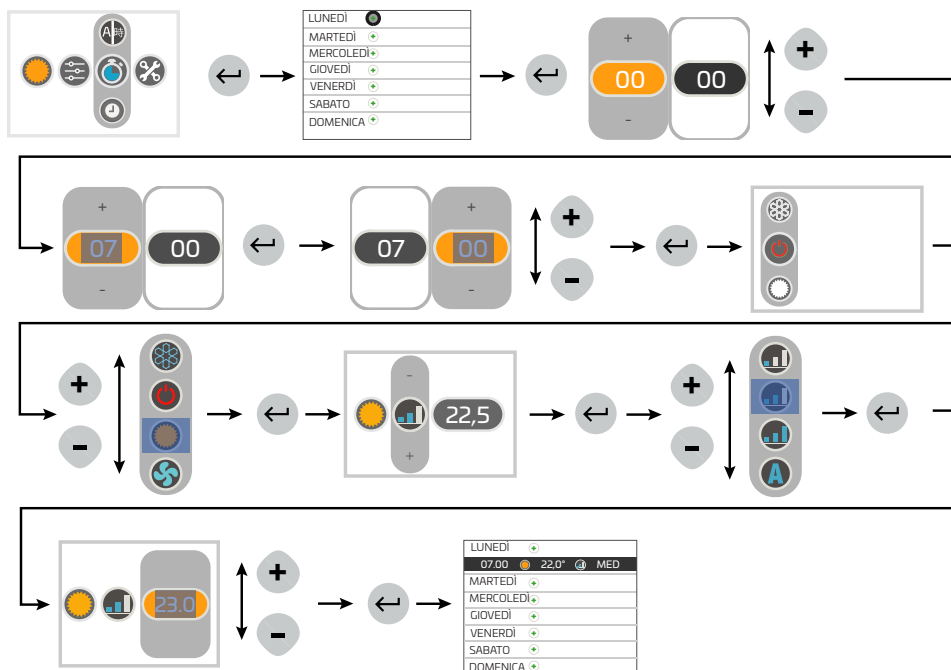
**IMPORTANTE:** per poter eseguire la configurazione di un programma TIMER è necessario eseguirne prima l'attivazione. Nel caso in cui si esegua la configurazione senza aver precedentemente attivato un programma, la configurazione verrà salvata automaticamente nel programma TIMER 1

Per configurare uno o più programmi TIMER 1,2,3:

- 1) attivare il programma che si vuole configurare tramite il menu di attivazione.
- 2) accedere al menu configurazione seguendo le istruzioni sotto riportate:

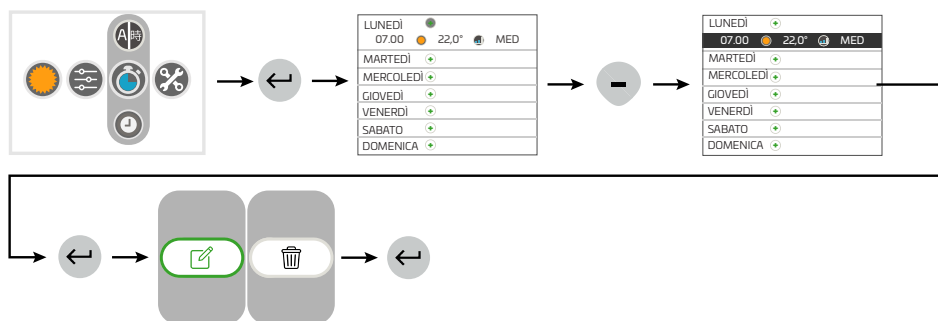
**Il salvataggio dei programmi avviene automaticamente all'uscita dalla schermata**

**ATTENZIONE!: dopo un periodo di 60 sec dall'ultima azione, il comando esce automaticamente dalla schermata salvando i programmi impostati.**



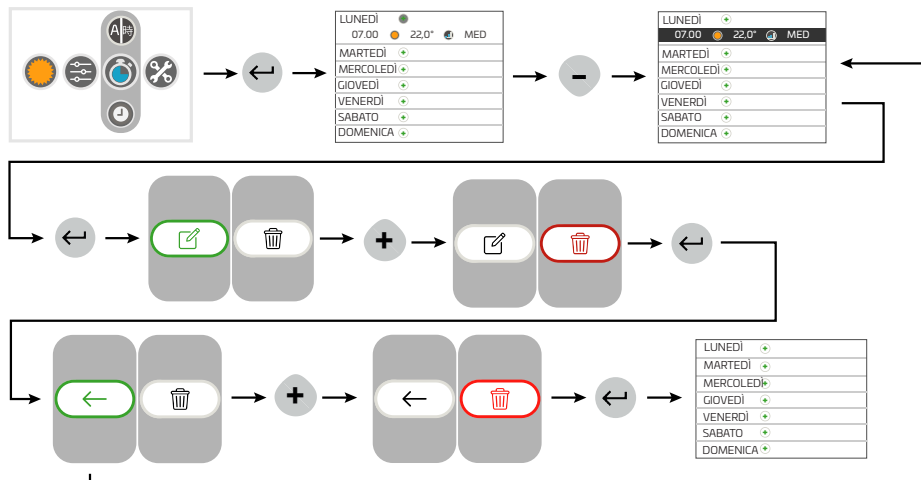
**IMPORTANTE!** Prima di modificare o eliminare un programma **TIMER** occorre che sia attivato nel menù "Attivazione" (vedi capitolo dedicato).

## TIMER - Modifica Programma



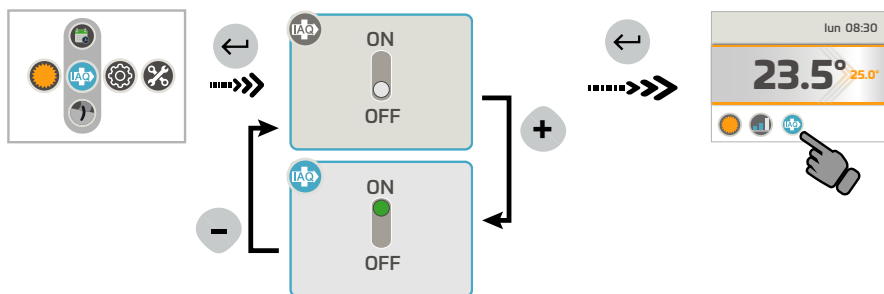


## TIMER - Eliminazione Programma

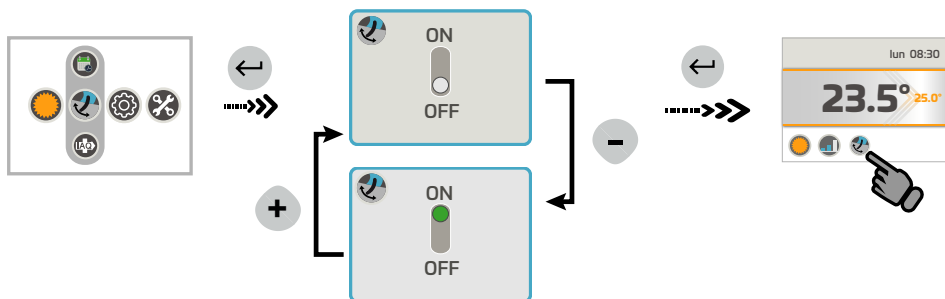


## FUNZIONALITA' SECONDARIE

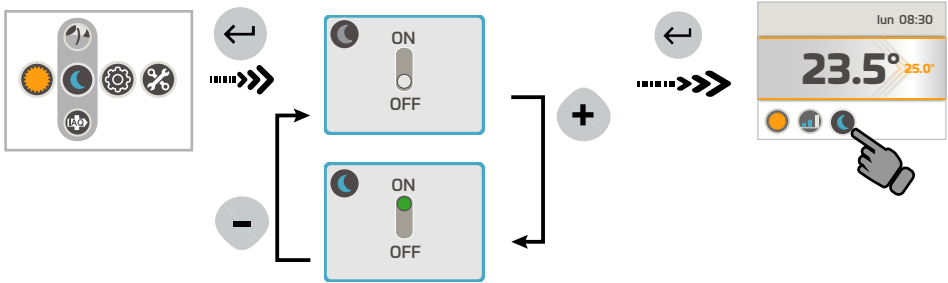
### • Attivazione Filtro IAQ



### • Attivazione FLAP SWING



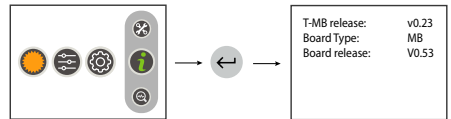
**Attivazione modalità NIGHT**



**MENU' INFORMAZIONI**

Nel Menù *INFORMAZIONI* sarà possibile visualizzare:

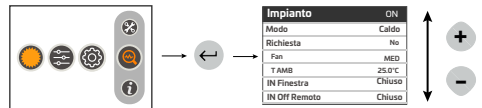
- Firmware Comando T-MB 2
- Tipo apparecchio collegato
- Firmware scheda collegata



**MENU' DIAGNOSTICA**

Nel Menù *DIAGNOSTICA* sarà possibile visualizzare lo stato del TMB2, dell'unità a cui è collegato ed eventuali segnalazioni di stato di allarme presenti:

- Stato di allarme (presente solo se vi è un allarme in corso)
- Stato (On/Off)
- Modalità
- Velocità fan
- Stato valvole
- Valori letti dalle sonde (T2/T3 disponibile solo su schede MB in collegamento MASTER)
- Modalità di lavoro speciali (ciclo di antistratificazione, Ciclo Power On .....
- Stato contatto finestra
- Stato on/off remoto
- Allarme pompa (se disponibile)



**ALLARMI**

Versione MB

- AL1 = sonda T1 guasta
- AL2 = sonda T2 guasta
- AL3 = sonda T3 guasta
- AL4 = allarme condensa
- AL6 = Allarme sonda NTC controller
- AL7 = Errore timekeeper
- AL8 = allarme antigelo scheda
- AL9 = cool not possible
- AL10= allarme comunicazione scheda FLAP (se disponibile)
- AL12 = RTC KO (errore timekeeper scheda (se disponibile))
- AL13 = ON / Off remoto

Versione AU

- AL1 = sonda T1 guasta
- AL2 = sonda T2 guasta
- AL3 = sonda T3 guasta
- AL6 = Allarme sonda NTC controller
- AL7 = Errore Timekeeper
- AL9 = cool not possible

Versione LAMA ARIA

- AL1 = sonda T1 guasta
- AL6 = Allarme sonda NTC controller
- AL7 = Errore Timekeeper

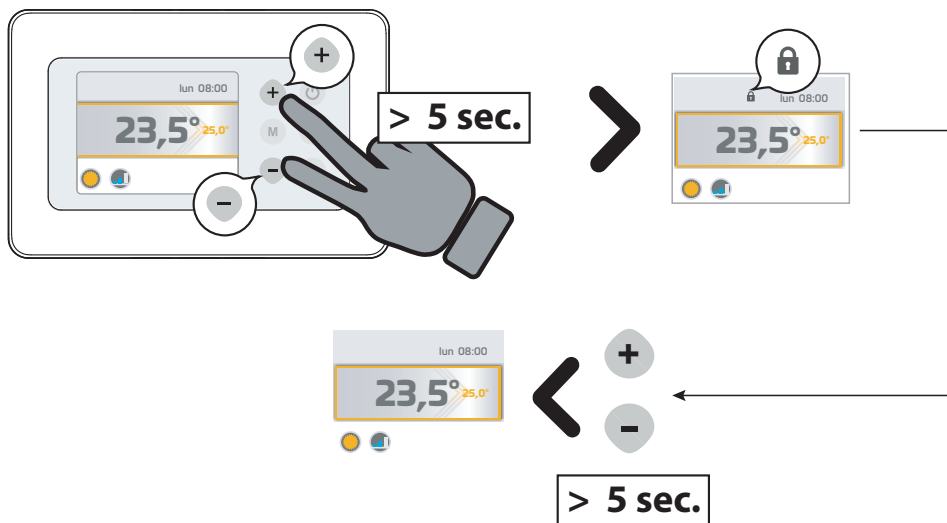
## MENU' INSTALLATORE

Nel Menù *INSTALLATORE* sarà possibile visualizzare e modificare i parametri di funzionamento del termostato. Scegliere il parametro da modificare premendo i tasti "+" o "-" e confermare con il tasto "M". Una volta selezionato il parametro, il display visualizzerà il valore. Il valore potrà essere modificato attraverso i tasti "+" o "-". Premendo una sola volta il tasto "M" si torna alla scelta di parametri; per uscire dal menù premere nuovamente il tasto "M".

**ATTENZIONE:** i parametri disponibili dipendono dalla unità a cui il TMB2 è collegato; in funzione della unità, solo alcuni potrebbero essere disponibili.

| <b>FUNZIONE<br/>/PARAMETRO</b> | <b>DESCRIZIONE</b>   | <b>RANGE/SCelta</b>  |
|--------------------------------|--|--|
| <b>+/-3 MODE</b>               | Imposta il comando in configurazione +/- 3 (solo MB)   | ON = attivazione configurazione +/- 3  |
| <b>T-MB NTC</b>                | Seleziona il sensore di temperatura presente sul T-MB2 oppure montato sulla'apparecchio (T1) | ON = sensore TMB2<br>OFF= Sensore apparecchio  |
| <b>T DISP</b>                  | Scelta di visualizzazione della temperatura  | TAMB = temperatura ambiente (legata al parametro T-MB2 NTC)<br>T SET = visualizza la temperatura del SET |
| <b>°C/°F</b>                   | modifica dell'unità di misura della temperatura  | °C / °F  |
| <b>BMS</b>                     | Modalità sotto supervisione On/Off   | ON - OFF   |
| <b>INST</b>                    | Accesso Installatore   |  |
| <b>OFS</b>                     | Variazione offset sonda NTC T-MB2  | 0 ÷ 5°C  |
| <b>T2-1</b>                    | Cambio stato da ventilazione a raffrescamento  | 15 ÷ 25°C  |
| <b>T2-2</b>                    | Cambio stato da ventilazione a riscaldamento   | 25 ÷ 35°C  |
| <b>I-T2</b>                    | Isteresi sonda T2  |  |
| <b>T3-1</b>                    | Ventilatore ON in riscaldamento  | > 30 ÷ 40°C  |
| <b>T3-2</b>                    | Ventilatore ON in raffrescamento   | < 10 ÷ 25°C  |
| <b>I-T3</b>                    | Isteresi sonda T3  | 2 ÷ 6°C  |
| <b>F-t1</b>                    | tempo attesa antistratificazione   |  |
| <b>F-t2</b>                    | durata post ventilazione   |  |
| <b>F-t3</b>                    | Tempo di post ventilazione   |  |
| <b>Irl</b>                     | Isteresi dei relè  | 0,5 ÷ 2,0°C  |
| <b>dEdr</b>                    | Campo di impostazione zona morta   | 1 ÷ 6°C  |
| <b>t1ds</b>                    | Scompensazione sonda aria T1 ciclo invernale   | 0,5 ÷ 2,0°C  |
| <b>Slu1</b>                    | Tensione min. velocità   | 1 ÷ 6  |
| <b>Scu2</b>                    | Tensione med. Velocità   | 3 ÷ 8  |
| <b>SHu3</b>                    | Tensione max. velocità   | 6 ÷ 10   |
| <b>LLSI</b>                    | Tensione min. velocità per fan auto inverno  | 1 ÷ 6  |
| <b>HLSI</b>                    | Tensione max. velocità per fan auto inverno  | 5 ÷ 10   |
| <b>PFC</b>                     | Banda proporzionale in raffrescamento  | 2,0 ÷ 6,0  |
| <b>PFH</b>                     | Banda proporzionale in riscaldamento   | 2,0 ÷ 6,0  |
| <b>dS</b>                      | dS Range di variazione del set con T-MB ± 9°C ± 3°C  | ± 9°C  |
| <b>Pt1</b>                     | Tempo di ritardo intervento pompa  | 0 ÷ 300 sec.   |
| <b>Pt2</b>                     | Tempo di OFF in Estate   | 30 ÷ 90 min.   |
| <b>Pt3</b>                     | Tempo di ON in Estate  | 0 ÷ 5 min.   |
| <b>LLSE</b>                    | Tensione min. velocità per fan auto estate   | 1 ÷ 6  |
| <b>HLSE</b>                    | Tensione max. velocità per fan auto estate   | 5 ÷ 10   |
| <b>t1SE</b>                    | Scompensazione t1 ESTATE   | 0 ÷ 2,0°C  |
| <b>Ft2E</b>                    | Durata Antistratificazione ESTATE  | 0 ÷ 180 sec  |
| <b>t1SI</b>                    | Scompensazione t1 Inverno  | 0 ÷ 5,0°C  |
| <b>Ft2I</b>                    | Durata Antistratificazione INVERNO   | 0 ÷ 210 sec  |
| <b>tVIS</b>                    | Scelta tipo visualizzazione temperatura (vers. AU)   | 0 = Comando a parete<br>1 = Sonda bordo macchina<br>2 = set point corrente                               |
| <b>dEds</b>                    | Punto centrale zona morta (vers. AU)   | 18 ÷ 30°C  |
| <b>RESET</b>                   | Reset Parametri  |  |

## BLOCCO TASTI



## CONTROL WIRING CONNECTIONS

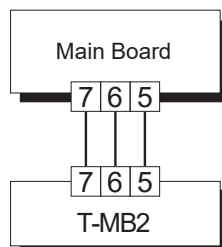
The control panel must be wired to the power board located inside the electrical compartment of the unit, complying with the correspondence of the common numbering to both boards.

Use 3 conductors with 0.5 mm<sup>2</sup> section.

NOTE: The connection wiring must not exceed 20 metres in length.

**ATTENTION: the control must be used exclusively in the combinations with the control units provided from the manufacturer and reported within the manufacturer's documentation.**

**The control accordance with the relating safety Standards and Directives is assured only and exclusively according to such combinations.**

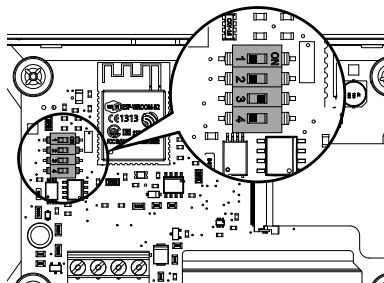


## DIP SWITCH SETTING

### DEFAULT

DIP 1 = OFF    DIP 3 = ON

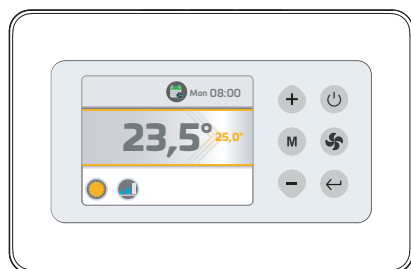
DIP 2 = OFF    DIP 4 = OFF








| FUNCTION                   | DIP1 | DIP2 | DIP3 | DIP4 |
|----------------------------|------|------|------|------|
| T-MB2 - Unit with MB board | OFF  | OFF  | ON   | OFF  |
| T-MB2 - Unit with AU board | OFF  | ON   | ON   | OFF  |
| T-MB2 - DOOR CURTAIN unit  | ON   | OFF  | ON   | OFF  |

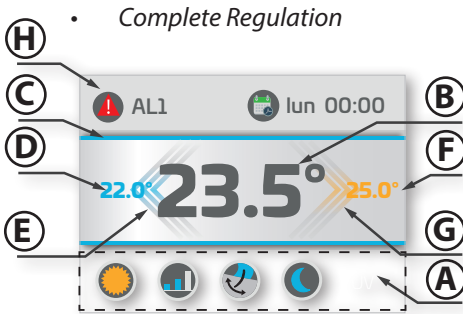
## CONTROL OVERVIEW

### BUTTONS



-  On/Off (Stand-by)
-  Mode
-  Enter/Return
-  Ventilation
-  Increase/Decrease

## DISPLAY



- A. Active function view
- B. Room Temperature
- C. Identification mode :
  - Summer/Cooling = Blue
  - Winter/Heating = Orange

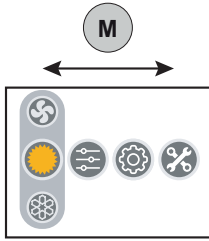


- D. Summer mode set
- E. Summer mode demand status
- F. Winter mode set
- G. Winter mode demand status
- H. Alarm view
- I. View into the +/-3 version (only MB)

## SYMBOLS

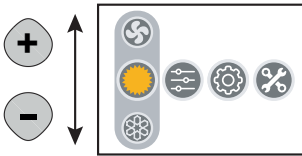
|  |  |  |  |  |  |
|--|--|--|--|--|--|
|  | Summer - Cooling Mode  |  | Timer Programming                          |  | MINIMUM speed (3 step FAN)   |
|  | Winter - Heating Mode  |  | Clock set                                  |  | MEDIUM speed (3 step FAN)  |
|  | Automatic Mode   |  | Installer menu                             |  | MAXIMUM speed (3 step FAN)   |
|  | Ventilation Mode   |  | Information                                |  | AUTOMATIC speed  |
|  | - Flap Swing activation menu<br>- Active Swing signaling           |  | Troubleshooting Status view                |  | LINEAR speed 1-10 Volt range (if available)                        |
|  | - IAQ activation menu<br>- Active IAQ Filter signaling             |  | Alarm presence                             |  | Stand-by   |
|  | - Night mode activation menu<br>- Active Night mode signaling      |  | Active Anti-Stratification Cycle signaling |  | Language menu  |
|  | - Timer activation menu  |  | Active heater signaling                    |  | Activated Remote ON/OFF signalling                                 |
|  | - Timer activation 1,2 or 3<br>- Active Timer signaling (1,2 or 3) |  | Heater signaling Max. power activation     |  | Activated Window contact signaling (available only with MB boards) |
|  | - Timer APP activation<br>- Active Timer APP signaling             |  | - Not active Timer                         |  |  |

## USE OF THE BUTTONS FOR THE BROWSING



### **Horizontal shifting :**

for shiftings from left to right among the menus press the **M** button. At each pressure a shifting takes place.



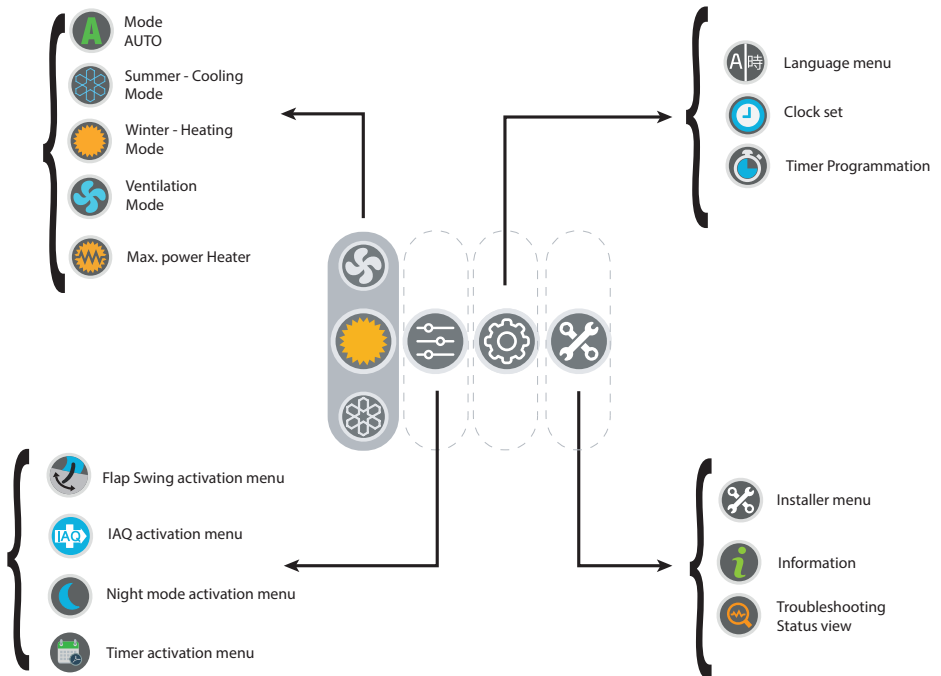
### **Vertical shifting :**

for shiftings from the top down among the menus to choose the operating mode press the **+** **-** buttons. At each pressure a shifting takes place.

### **To Confirm :**

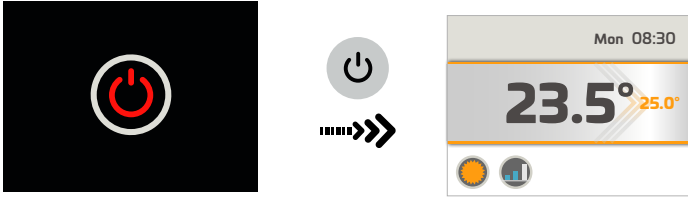
to confirm the choice of the menu or of the operating mode press the **←** button.

## OVERVIEW OF THE MENUS

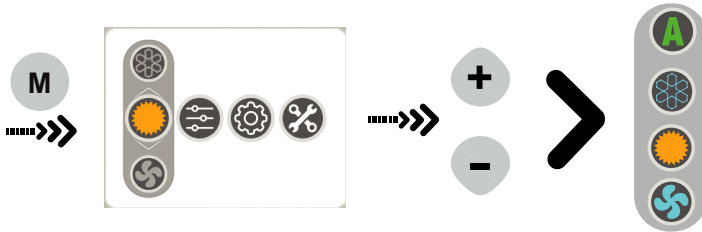


## PRIMARY OPERATING MODES

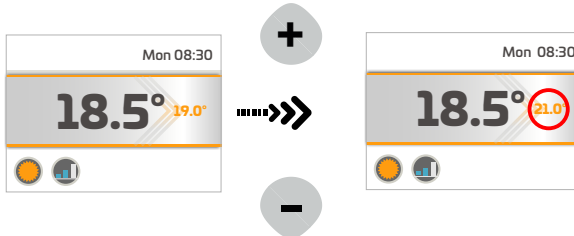
- ON/OFF



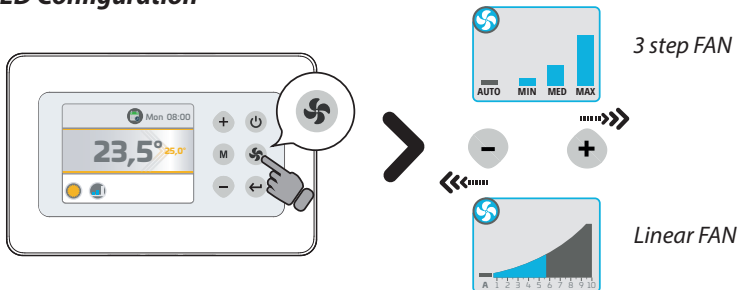
- MODE Configuration



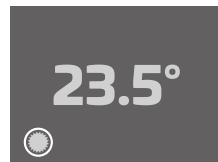
- SET Configuration



- SPEED Configuration

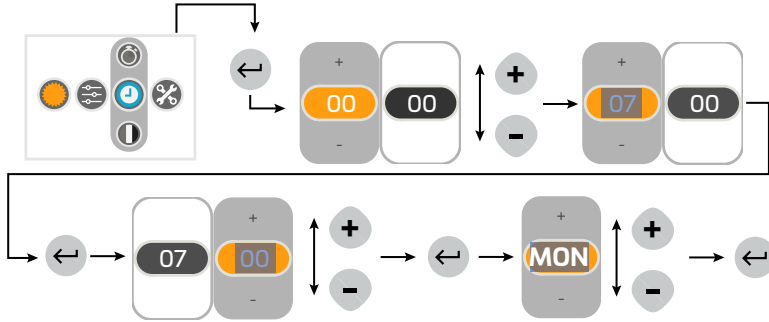


**ATTENTION!:** after a period of 60 sec from the last operating mode the display light is reduced (SLEEPING operating mode) and it will show only the detected room temperature.





## CLOCK SETTING



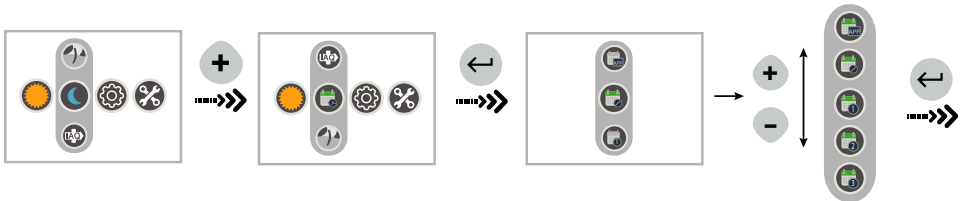
## Timer - Activation

There are 4 TIMER programs optionally activable : TIMER1, TIMER 2, TIMER 3, TIMER APP.

**TIMER1, TIMER 2, TIMER 3:** suitable for setting on the TMB control; follow the instructions reported here below for setup and activation of the 3 programs.

**TIMER APP:** suitable for recording the TIMER program configured via APP (If available).

To choice what TIMER program (previously set) to activate, follow the instructions reported here below :



## TIMER - Program Setup

**As a default all the timers produced are not configured.**

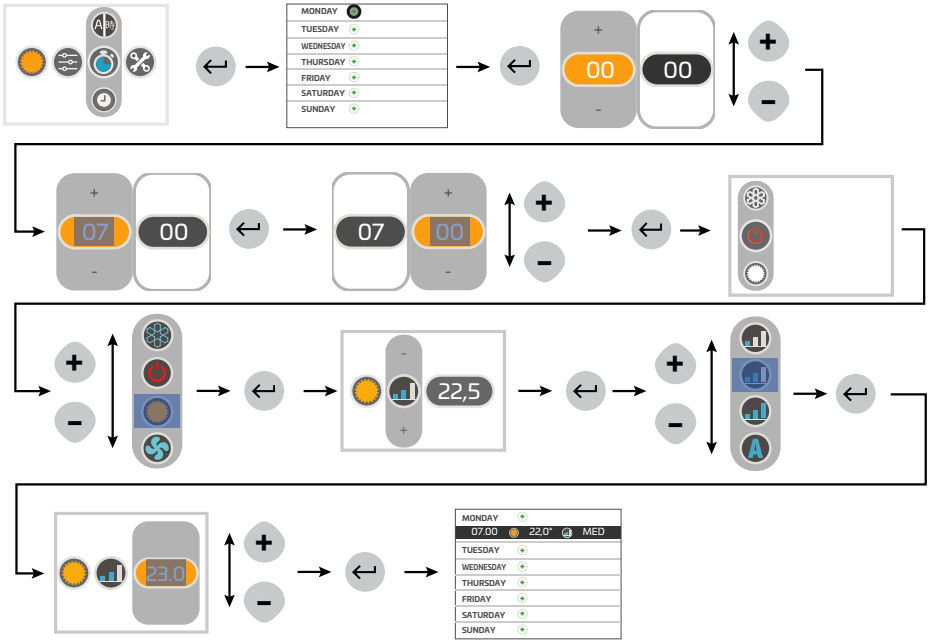
***IMPORTANT :*** to proceed with a **TIMER** program setup is necessary first of all to active it. In case of running the setup without having previously activated a program, the configuration will be automatically stored within the **TIMER 1** program.

To set one ore several **TIMER** programs 1,2,3 :

- 1) Activate the desired program by setting it via the activation menu.
- 2) To access to the configuration menu just follow the instructions reported here below:

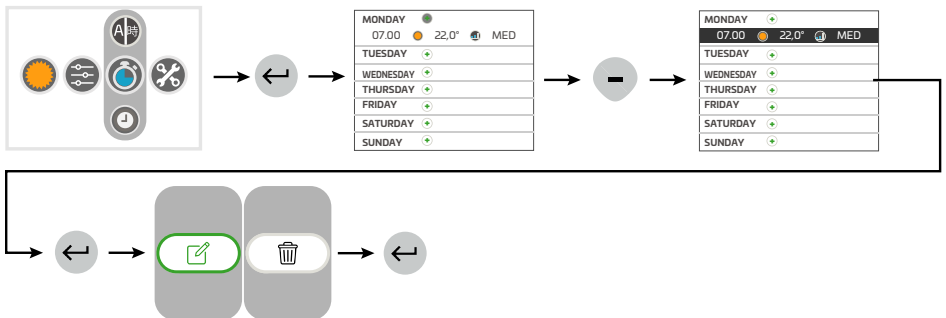
**The program saving is done automatically at the exit from the screen.**

**ATTENTION!:** after a period of 60 sec from the last operation, the control exits automatically from the screen by saving the configured programs.

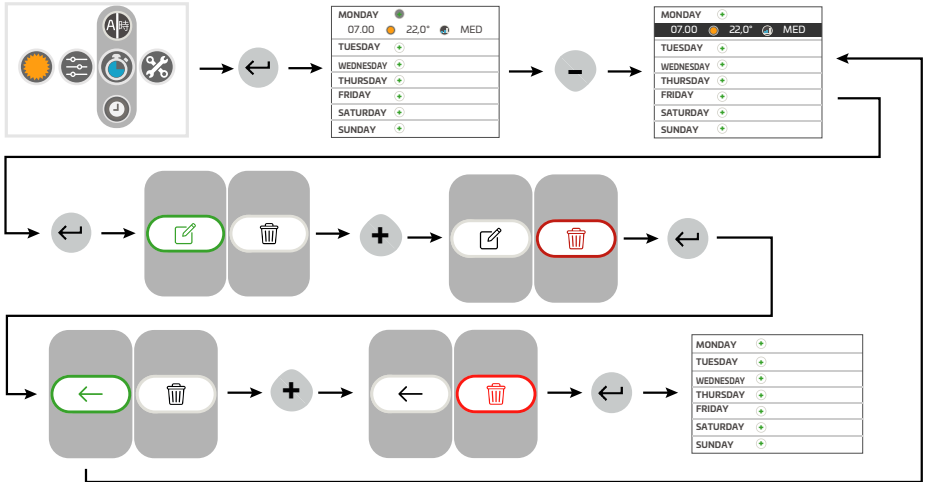


**IMPORTANT!** Before modifying or deleting a **TIMER** program, it is necessary to activate it in the "Activation" menu (see dedicated chapter).

### TIMER - Program change

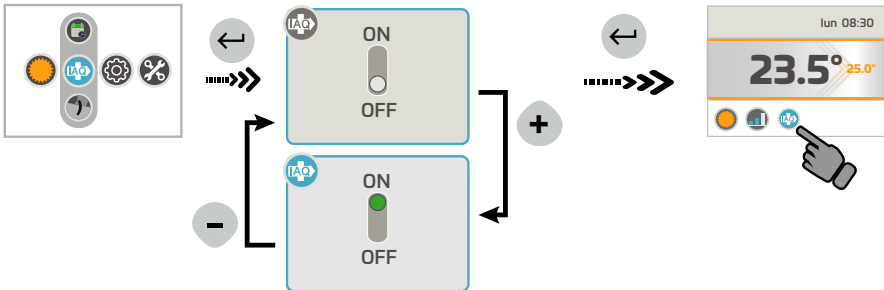


## TIMER - Program removal

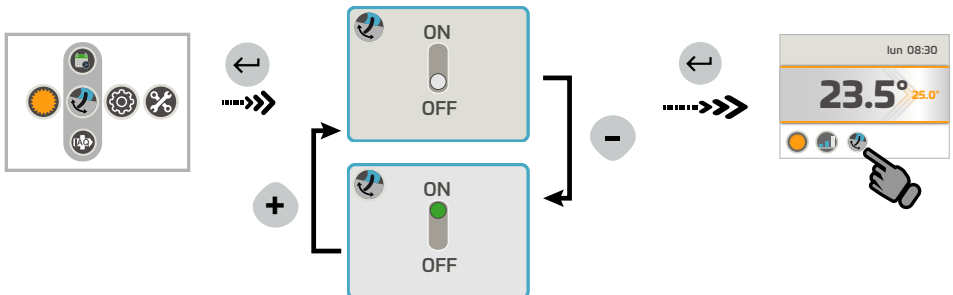


## SECONDARY OPERATING MODES

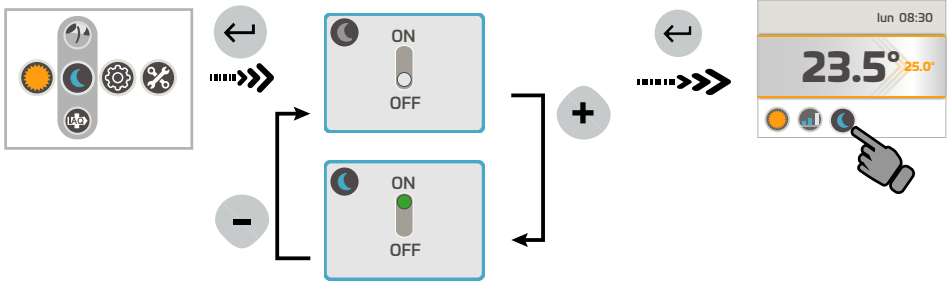
### • IAQ Filter activation



### • FLAP SWING activation



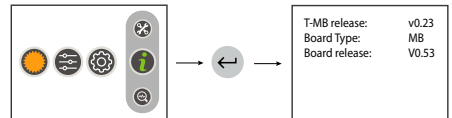
**NIGHT mode activation**



**INFORMATION MENU**

Within the *INFORMATION* menu it will be possible to view :

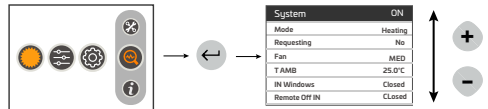
- T-MB 2 control Firmware
- Connected unit type
- Connected board Firmware



**TROUBLESHOOTING MENU**

In the *TROUBLESHOOTING* menu it will be possible to view the status of the TMB2 control, of the unit to which it is connected and probable signalings of alarm status presence :

- Alarm status (operating only if an alarm is on)
- Status (On/Off)
- Mode
- Fan speed
- Valve status
- Values detected by the probes (T2/T3 available only on MB boards into MASTER connection)
- Special operating modes (anti-stratification cycle, Power On cycle.....)
- Window contact status
- Remote on/off status
- Pump alarm (if available)



**ALARMS**

MB Version

- AL1 = T1 faulty probe
- AL2 = T2 faulty probe
- AL3 = T3 faulty probe
- AL4 = Condensate alarm
- AL6 = NTC probe alarm controller
- AL7 = Timekeeper error
- AL8 = Anti-freeze board alarm
- AL9 = Cooling not possible
- AL10= FLAP board communication alarm (if available)
- AL12 = RTC KO (timekeeper board error (if available)
- AL13 = Remote ON / Off

AU Version

- AL1 = T1 faulty probe
- AL2 = T2 faulty probe
- AL3 = T3 faulty probe
- AL6 = NTC probe alarm controller
- AL7 = Timekeeper error
- AL9 = Cooling not possible

Air curtain version

- AL1 = T1 faulty probe
- AL6 = NTC probe alarm controller
- AL7 = Timekeeper error

## INSTALLER MENU

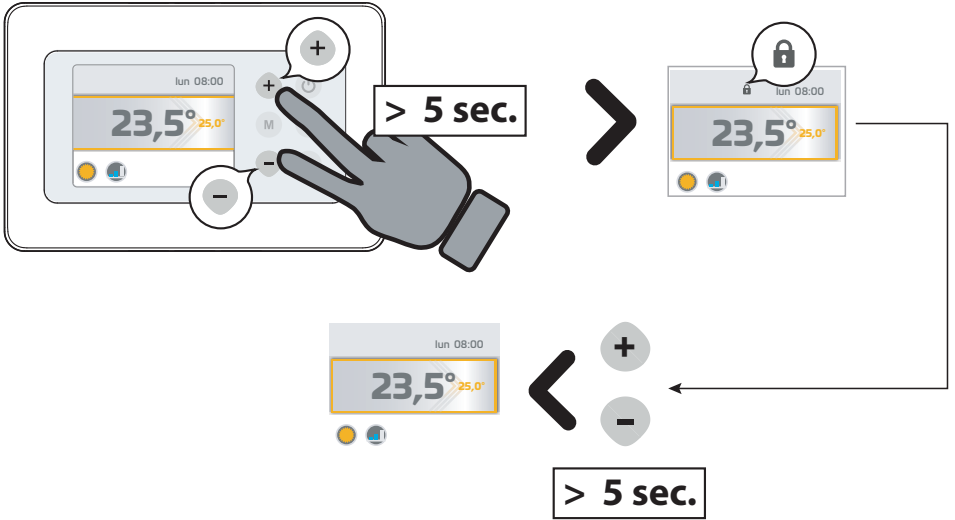
With the *INSTALLER menu* it will be possible to view and modify the thermostat operating parameters. Choose the parameter to modify by pressing the "+" or "-" buttons and confirm with the "M" button. Once the parameter is selected, the display will show the value. It will be possible to modify the value by pressing the "+" or "-" buttons.

Press the "M" button only one time to turn back to the parameter choice; to get out from the menu, press the "M" button again.

**ATTENTION:** the available parameters depend from the unit to which the T-MB2 is connected; according to the unit, only a few ones could be available.

| <b><u>FUNCTION</u></b><br><b><u>/PARAMETER</u></b> | <b><u>DESCRIPTION</u></b>  | <b><u>RANGE</u></b>  |
|--|--|--|
| <b><u>+/-3 MODE</u></b>                            | Set the control into the +/- 3 configuration (only MB)               | ON = +/- 3 configuration activation  |
| <b><u>T-MB NTC</u></b>                             | Select the temperature probe fitted on the T-MB2 or on the unit (T1) | ON = TMB2 probe<br>OFF= Unit probe   |
| <b><u>T DISP</u></b>                               | Temperature view choice  | TAMB = room temperature (related to the T-MB2 NTC parameter)<br>T SET = view the SET temperature |
| <b><u>°C/°F</u></b>                                | Temperature unit of mesure change                                    | °C / °F  |
| <b><u>BMS</u></b>                                  | On/Off under supervision mode  | ON - OFF   |
| <b><u>INST</u></b>                                 | Installer Access   |  |
| <b><u>OFS</u></b>                                  | T-MB2 NTC probe offset variation                                     | 0 ÷ 5°C  |
| <b><u>T2-1</u></b>                                 | Status change from ventilation to cooling                            | 15 ÷ 25°C  |
| <b><u>T2-2</u></b>                                 | Status change from ventilation to heating                            | 25 ÷ 35°C  |
| <b><u>I-T2</u></b>                                 | T2 probe hysteresis  |  |
| <b><u>T3-1</u></b>                                 | Fan ON in heating  | > 30 ÷ 40°C  |
| <b><u>T3-2</u></b>                                 | Fan ON in cooling  | < 10 ÷ 25°C  |
| <b><u>I-T3</u></b>                                 | T3 probe hysteresis  | 2 ÷ 6°C  |
| <b><u>F-t1</u></b>                                 | Anti-stratification waiting time                                     |  |
| <b><u>F-t2</u></b>                                 | Post ventilation duration  |  |
| <b><u>F-t3</u></b>                                 | Post ventilation time  |  |
| <b><u>Irl</u></b>                                  | Hysteresis of relays   | 0,5 ÷ 2,0°C  |
| <b><u>dEdr</u></b>                                 | Dead zone setup field  | 1 ÷ 6°C  |
| <b><u>t1ds</u></b>                                 | T1 air probe decompensation winter cycle                             | 0,5 ÷ 2,0°C  |
| <b><u>Slu1</u></b>                                 | Min. speed tension   | 1 ÷ 6  |
| <b><u>Scu2</u></b>                                 | Med. speed tension   | 3 ÷ 8  |
| <b><u>SHu3</u></b>                                 | Max. speed tension   | 6 ÷ 10   |
| <b><u>LlSl</u></b>                                 | Min. speed tension for fan auto winter                               | 1 ÷ 6  |
| <b><u>HlSl</u></b>                                 | Max. speed tension for fan auto winter                               | 5 ÷ 10   |
| <b><u>PFC</u></b>                                  | Proportional band in cooling   | 2,0 ÷ 6,0  |
| <b><u>PFH</u></b>                                  | Proportional band in heating   | 2,0 ÷ 6,0  |
| <b><u>dS</u></b>                                   | dS Set Variation Range with T-MB ± 9°C ± 3°C                         | ± 9°C  |
| <b><u>Pt1</u></b>                                  | Pump intervention delay time   | 0 ÷ 300 sec.   |
| <b><u>Pt2</u></b>                                  | OFF time in Summer   | 30 ÷ 90 min.   |
| <b><u>Pt3</u></b>                                  | ON time in Summer  | 0 ÷ 5 min.   |
| <b><u>LLSE</u></b>                                 | Min. speed tension for fan auto summer                               | 1 ÷ 6  |
| <b><u>HLSE</u></b>                                 | Max. speed tension for fan auto summer                               | 5 ÷ 10   |
| <b><u>t1SE</u></b>                                 | T1 air probe decompensation SUMMER                                   | 0 ÷ 2,0°C  |
| <b><u>Ft2E</u></b>                                 | Anti-stratification time SUMMER                                      | 0 ÷ 180 sec  |
| <b><u>t1sl</u></b>                                 | T1 air probe decompensation WINTER                                   | 0 ÷ 5,0°C  |
| <b><u>Ft2I</u></b>                                 | Anti-stratification time WINTER                                      | 0 ÷ 210 sec  |
| <b><u>tVIS</u></b>                                 | Temperature view type choice<br>(Vers. AU)                           | 0 = Wall control<br>1 = Probe fitted on the unit<br>2 = Current setpoint                         |
| <b><u>dEds</u></b>                                 | Dead zone central point  | 18 ÷ 30°C  |
| <b><u>RESET</u></b>                                | Reset Parameters   |  |

# KEY LOCK



## RACCORDEMENTS ELECTRIQUES DE LA COMMANDE

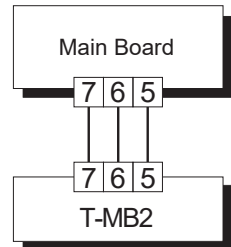
Le panneau de commandes doit être branché électriquement à la carte de puissance située à l'intérieur de l'appareil électrique de l'unité, en respectant la correspondance de la numérotation commune à l'ensemble des cartes.

Utiliser 3 conducteurs avec section 0,5 mm<sup>2</sup>.

NOTE : La longueur du câble de raccordement ne doit pas dépasser 20 mètres.

**ATTENTION: la commande doit être utilisée uniquement en combinaisons avec les unités livrées par le fabricant et citées dans la documentation du fabricant même.**

**La conformité de la commande avec les Normes et Directives de sécurité applicables est assurée uniquement et exclusivement selon telles combinaisons.**

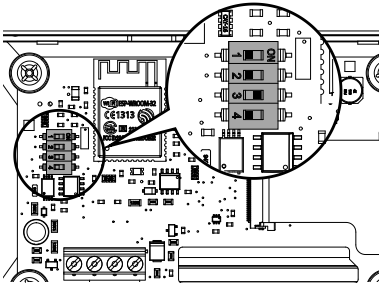


## PROGRAMMATION DES DIPSWITCHES

### DEFAULT

DIP 1 = OFF    DIP 3 = ON

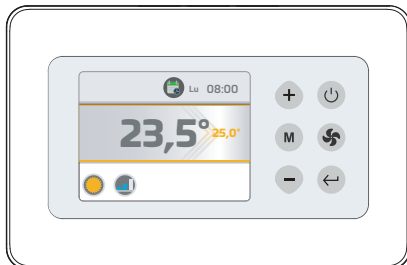
DIP 2 = OFF    DIP 4 = OFF



| FUNCTION                    | DIP1 | DIP2 | DIP3 | DIP4 |
|-----------------------------|------|------|------|------|
| T-MB2 – unité avec carte MB | OFF  | OFF  | ON   | OFF  |
| T-MB2 – unité avec carte AU | OFF  | ON   | ON   | OFF  |
| T-MB2 – unite RIDEAU D'AIR  | ON   | OFF  | ON   | OFF  |

## VUE D'ENSEMBLE COMMANDE

### TOUCHES



On/Off (Stand-by)

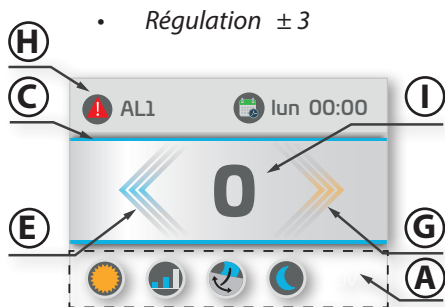
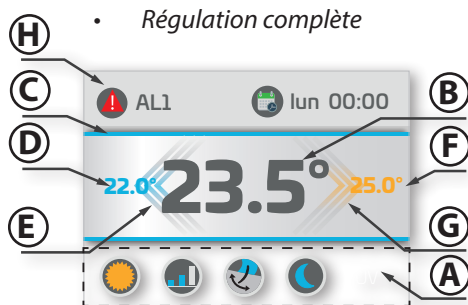
Mode

Enter/Retour

Ventilation

Accroître / Diminution

## AFFICHAGE



- A. Affichage des fonctions actives  
 B. Température Ambiante  
 C. Identification mode:  
 • Eté/Refroidissement = Bleu  
 • Hiver/Chauffage = Orange

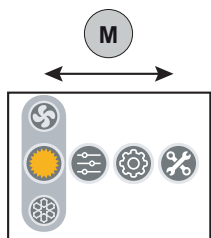
- D. Set mode Eté  
 E. Etat de demande mode Eté  
 F. Set mode Hiver  
 G. Etat de demande mode Hiver  
 H. Affichage Alarmes  
 I. Affichage en version +/-3  
 (uniquement MB)

## SYMBOLES

|  |   |  |   |  |   |
|--|---|--|---|--|---|
|  | Mode<br>Eté – Refroidissement   |  | Programmation Timer                               |  | Vitesse MINIMALE<br>(VENTILATEUR à 3 étapes)                                      |
|  | Mode<br>Hiver – Chauffage   |  | Programmation Horloge                             |  | Vitesse MOYENNE<br>(VENTILATEUR à 3 étapes)                                       |
|  | Mode Automatique  |  | Menu Installateur                                 |  | Vitesse MAXIMALE<br>(VENTILATEUR à 3 étapes)                                      |
|  | Mode Ventilation  |  | Informations                                      |  | Vitesse AUTOMATIQUE   |
|  | - Menu activation Flap Swing<br>- Signalisation Swing Actif           |  | Dépannage<br>Visualisation état                   |  | Vitesse LINEAIRE<br>éventail 1-10 Volt (si disponible)                            |
|  | - Menu activation IAQ<br>- Signalisation Filtre IAQ Actif             |  | Présence Alarme                                   |  | Stand-by  |
|  | - Menu activation mode Nuit<br>- Signalisation mode Nuit Actif        |  | Signalisation Cycle<br>Anti-stratification Actif  |  | Menu Language   |
|  | - Menu activation Timer   |  | Signalisation Résistance<br>Active                |  | Signalisation mode ON/OFF à<br>distance actif                                     |
|  | - Activation Timer 1,2 ou 3<br>- Signalisation Timer Actif (1,2 ou 3) |  | Signalisation Résistance<br>Active Max. Puissance |  | Signalisation Contact Fenêtre actif<br>(disponible uniquement avec les cartes MB) |
|  | - Activation Timer APP<br>- Signalisation Timer APP Actif             |  | - Timer pas actif                                 |  |   |

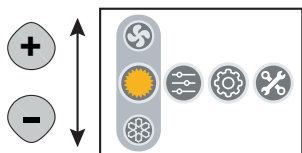


## USAGE DES TOCHES POUR LA NAVIGATION



### Déplacement horizontal :

Pour les déplacements horizontaux de gauche à droite appuyer entre les menus la touche **M**.  
A chaque pression on a un déplacement.



### Déplacement vertical :

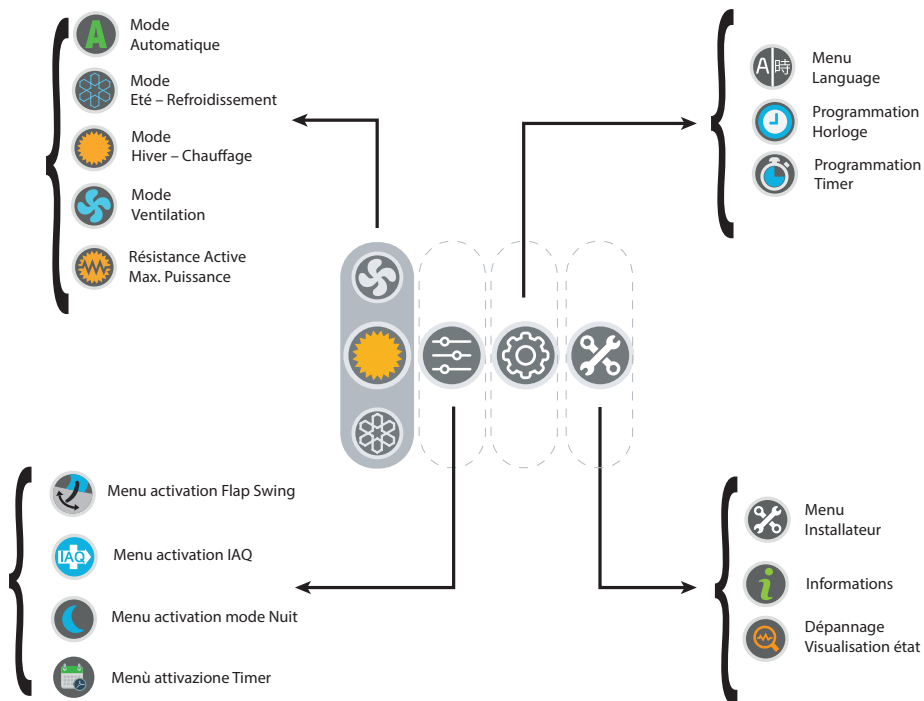
Pour les déplacements de haut en bas dans les menus pour le choix des modes opératifs appuyer les touches **+** **-**.  
A chaque pression on a un déplacement.

### Pour Confirmer:



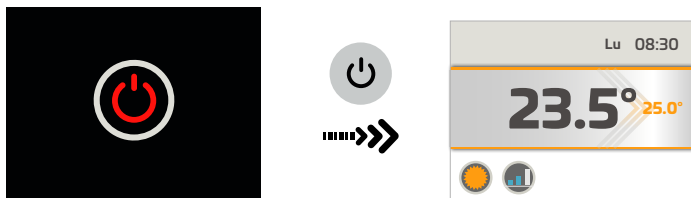
pour confirmer le choix du menu ou du mode opératif appuyer la touche **←**.

## VUE D'ENSEMBLE DES MENUS

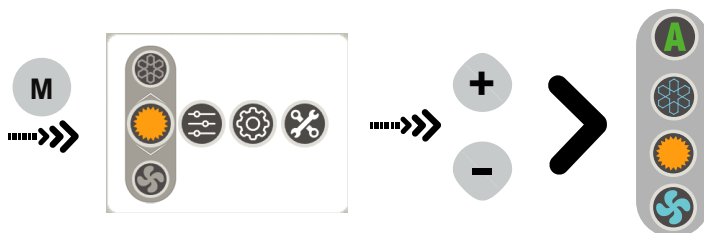


## MODES OPÉRATIFS PRIMAIRES

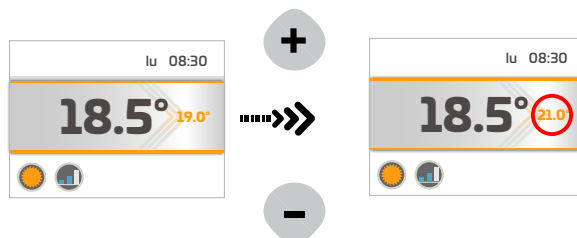
- **ON/OFF**



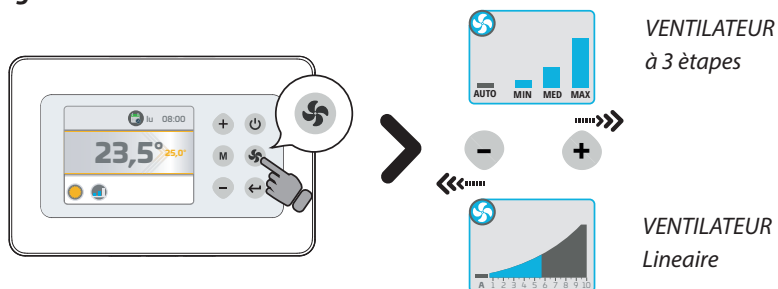
- **Configuration MODE**



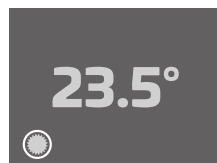
- **Configuration SET**



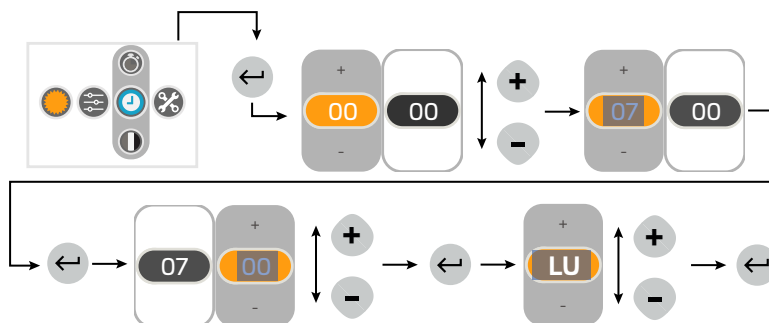
- **Configuration VITESSE**



**ATTENTION!** après un temps de 60 sec à partir de la dernière opération la lumière d'affichage vient réduite (modalité SLEEPING) et on va afficher uniquement la valeur de température ambiante détectée.



## PROGRAMMATION HORLOGE



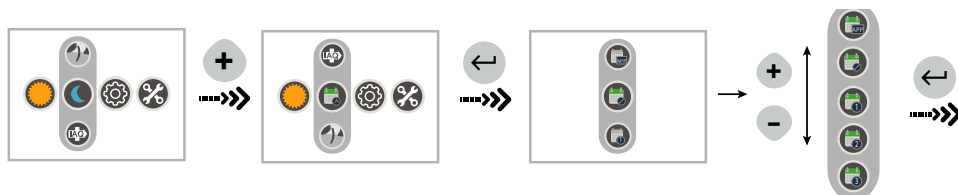
### TIMER - Activation

On peut choisir entre 4 programmes Timer activables : TIMER1, TIMER 2, TIMER 3, TIMER APP.

**TIMER1, TIMER 2, TIMER 3** : servent à la programmation sur la commande ; suivre les instructions ci-dessous pour programmation et activation des 3 programmes.

**TIMER APP**: sert à la enregistrement du programme TIMER programmé via APP (si disponible).

Afin de choisir le programme TIMER (précédemment mis en place) à activer, se référer à l'instruction ci-dessous:



### TIMER - Configuration Programme

Chaque TIMER vient fabriqué non configuré.

**IMPORTANT** : Pour la configuration d'un programme TIMER il est nécessaire en premier lieu qu'il soit **activé**. Si la programmation vient effectuée sans avoir précédemment activé aucun programme, la configuration vient automatiquement sauvée dans le programme TIMER 1.

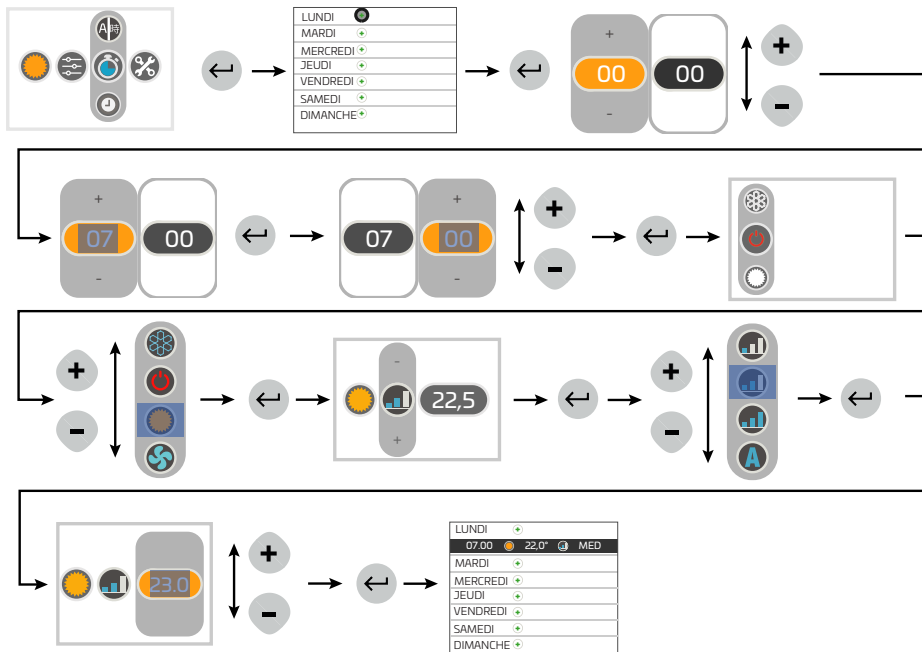
Pour la configuration de un ou plusieurs programmes TIMER 1,2,3 :

- 1) Activer le programme à configurer dans le menu Activation.
- 2) Accéder au menu configuration en suivant les instructions ci-dessous :

La sauvegarde des programmes se produit automatiquement à la sortie de l'écran.

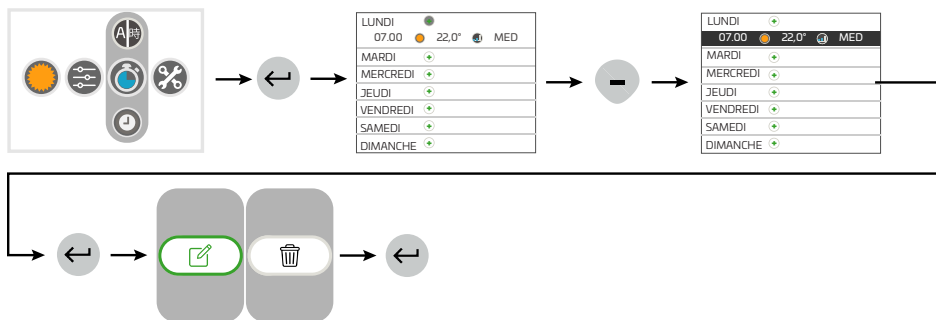
**ATTENTION!**: après un temps de 60 sec à partir de la dernière opération, la commande sort automatiquement de l'écran, en sauvegardant les programmes définies

## Français

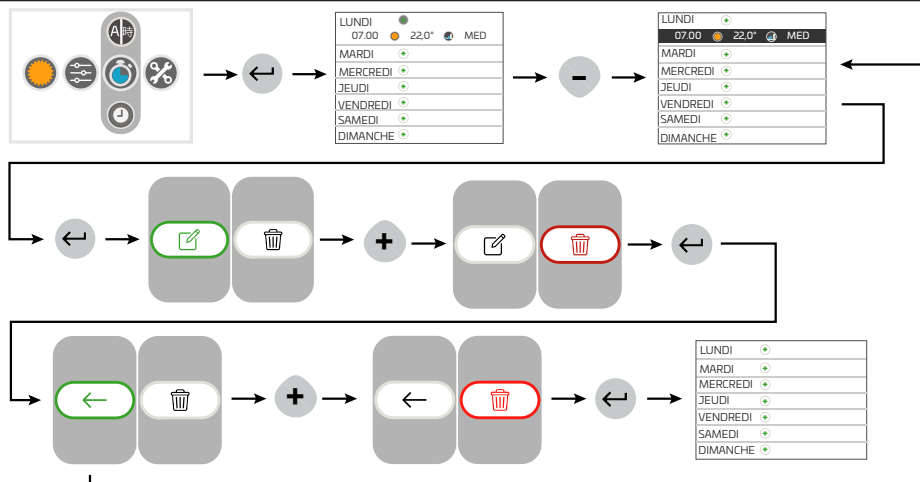


**IMPORTANT!** Avant de modifier ou supprimer un programme **TIMER** il faut qu'il soit activé dans le menu **Activation** (voir le chapitre dédié).

## TIMER – Modification Programme

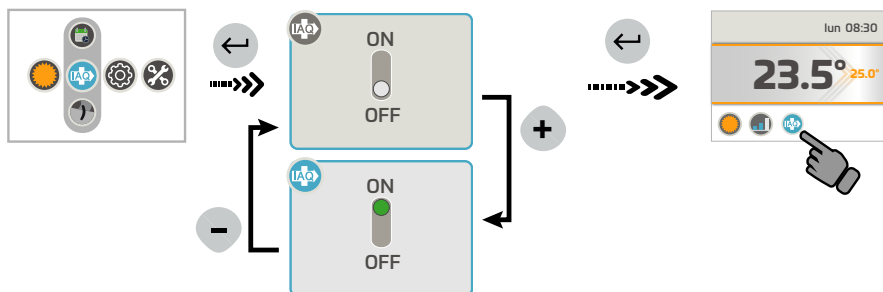


## TIMER - Suppression Programme

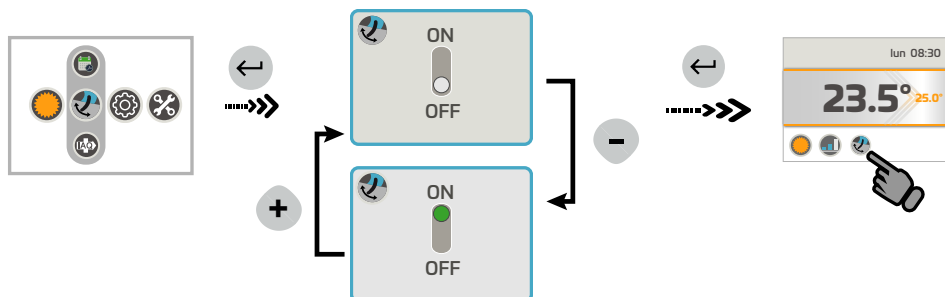


## MODES OPÉRATIFS SECUNDAIRES

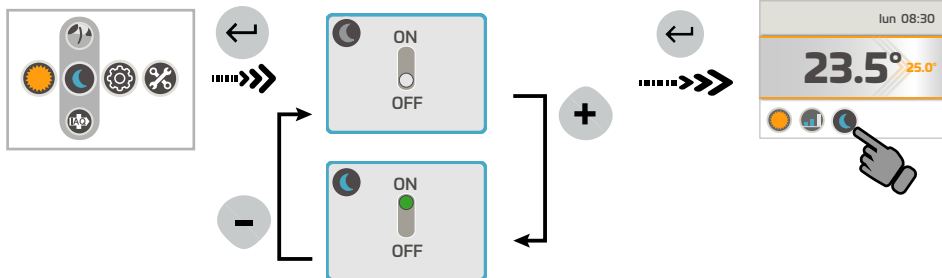
- Activation Filtre IAQ**



- Activation FLAP SWING**



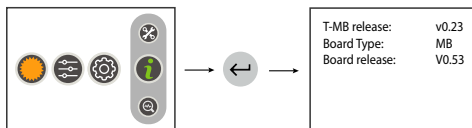
## • Activation mode NUIT



## MENU INFORMATIONS

Dans le Menu INFORMATIONS on pourra afficher :

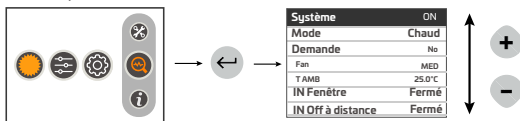
- Firmware Commande T-MB 2
- Type d'unité liée
- Firmware carte liée



## MENU DÉPANNAGE

Dans le menu DéPANNAGE on pourra afficher l'état de la commande T-MB2, de l'unité à laquelle elle est liée et eventuelles signalisations d'état Alarme présentes :Stato di allarme (presente solo se vi è un allarme in corso)

- Etat d'Alarme (présent seulement s'il y a un en cours)
- Etat (On/Off)
- Modalité
- Vitesse ventilateur
- Etat des vannes



- Valeurs luës par les capteurs (T2/T3 disponible uniquement sur régulateurs MB en connexion MASTER)
- Modalités opératives spéciales (cycle de anti-stratification, Cycle Power On .....
- Etat contacte fenêtre
- Etat on/off à distance
- Alarme pompe (si disponible)

## ALARMES

### • Version MB

- AL1 = Capteur T1 défectueux
- AL2 = Capteur T2 défectueux
- AL3 = Capteur T3 défectueux
- AL4 = Alarme condensats
- AL6 = Alarme capteur NTC controller
- AL7 = Erreur timekeeper
- AL8 = Alarme carte antigel
- AL9 = On ne peut pas refroidir
- AL10= Alarme communication carte FLAP (si disponible)
- AL12 = RTC KO (erreur carte timekeeper (si disponible)
- AL13 = ON / Off à distance

### • Version AU

- AL1 = capteur T1 défectueux
- AL2 = capteur T2 défectueux
- AL3 = capteur T3 défectueux
- AL6 = Alarme capteur NTC controller
- AL7 = Erreur Timekeeper
- AL9 = on ne peut pas refroidir

### • Version Rideaux d'air

- AL1 = capteur T1 défectueux
- AL6 = Alarme capteur NTC controller
- AL7 = Erreur Timekeeper

## MENU INSTALLATEUR

Dans le Menu *INSTALLATEUR* on pourra afficher et modifier les paramètres de fonctionnement du thermostat. Choisir le paramètre à modifier en appuyant les touches "+" ou "-" et confirmer avec la touche « M ». Lorsque le paramètre a été sélectionné, l'afficher ira visualiser la valeur. La valeur pourra être modifiée à travers les touches "+" ou "-". En appuyant seulement une fois la touche « M » on retourne au choix des paramètres ; pour sortir du menu, appuyer de nouveau la touche « M ».

**ATTENTION: les paramètres disponibles dépendent de l'unité à laquelle le T-MB2 est connecté; selon l'unité, seuls quelques-uns peuvent être disponibles.**

| <b>FNCTION/<br/>PARAMÈTRE</b> | <b>DESCRIPTION</b>   | <b>EVENTAIL/CHOIX</b>  |
|-------------------------------|--|--|
| <b>+/-3 MODE</b>              | Programme la commande en configuration +/- 3 (uniquement MB)                     | ON = activation configuration +/- 3  |
| <b>T-MB NTC</b>               | Sélectionne le capteur de température présent en T-MB2 ou monté sur l'unité (T1) | ON = capteur TMB2<br>OFF= capteur unité  |
| <b>T DISP</b>                 | Choix d'affichage de la température  | TAMB = température ambiante (liée au paramètre T-MB2 NTC)<br>T SET = visualise la température du SET |
| <b>°C/°F</b>                  | modifie l'unité de mesure de la température                                      | °C / °F  |
| <b>BMS</b>                    | Modalité sous supervision On/Off   | ON - OFF   |
| <b>INST</b>                   | Accès de l'Installateur  |  |
| <b>OFS</b>                    | Variation de décalage de la sonde NTC du T-MB2                                   | 0 ÷ 5°C  |
| <b>T2-1</b>                   | Changement de l'état de ventilation à refroidissement                            | 15 ÷ 25°C  |
| <b>T2-2</b>                   | Changement de l'état de ventilation au chauffage                                 | 25 ÷ 35°C  |
| <b>I-T2</b>                   | Hystérésis du capteur T2   |  |
| <b>T3-1</b>                   | Ventilateur MARCHE en mode chauffage   | > 30 ÷ 40°C  |
| <b>T3-2</b>                   | Ventilateur MARCHE en mode refroidissement                                       | < 10 ÷ 25°C  |
| <b>I-T3</b>                   | Hystérésis du capteur T3   | 2 ÷ 6°C  |
| <b>F-t1</b>                   | Temps d'atteinte anti-stratification   |  |
| <b>F-t2</b>                   | Durée après-ventilation  |  |
| <b>F-t3</b>                   | Temps d'après-ventilation  |  |
| <b>Irl</b>                    | Hystérésis des relais  | 0,5 ÷ 2,0°C  |
| <b>dEdr</b>                   | Champ de réglage de la zone morte  | 1 ÷ 6°C  |
| <b>t1ds</b>                   | Décompensation du capteur air T1 cycle hivernal                                  | 0,5 ÷ 2,0°C  |
| <b>Slu1</b>                   | Tension min. vitesse   | 1 ÷ 6  |
| <b>Scu2</b>                   | Tension moy. vitesse   | 3 ÷ 8  |
| <b>SHu3</b>                   | Tension max. vitesse   | 6 ÷ 10   |
| <b>LLSj</b>                   | Tension min. vitesse pour fan auto hiver   | 1 ÷ 6  |
| <b>HLSj</b>                   | Tension max. vitesse pour fan auto hiver   | 5 ÷ 10   |
| <b>PFC</b>                    | Bande proportionnelle en refroidissement   | 2,0 ÷ 6,0  |
| <b>PFH</b>                    | Bande proportionnelle en chauffage   | 2,0 ÷ 6,0  |
| <b>dS</b>                     | dS Réglage de gamme de variation du SET avec T-MB ± 9°C ± 3°C                    | ± 9°C  |
| <b>Pt1</b>                    | Temps de délai intervention pompe  | 0 ÷ 300 sec.   |
| <b>Pt2</b>                    | Temps ARRÊT en Été   | 30 ÷ 90 min.   |
| <b>Pt3</b>                    | Temps MARCHE en Été  | 0 ÷ 5 min.   |
| <b>LLSE</b>                   | Tension min. vitesse pour fan auto été   | 1 ÷ 6  |
| <b>HLSE</b>                   | Tension max. vitesse pour fan auto été   | 5 ÷ 10   |
| <b>t1SE</b>                   | Décompensation du capteur air T1 ÉTÉ   | 0 ÷ 2,0°C  |
| <b>Ft2E</b>                   | Temps anti-stratification ÉTÉ  | 0 ÷ 180 sec  |
| <b>t1sI</b>                   | Décompensation du capteur air T1 HIVER   | 0 ÷ 5,0°C  |
| <b>Ft2I</b>                   | Temps anti-stratification HIVER  | 0 ÷ 210 sec  |
| <b>tVIS</b>                   | Choix type d'affichage température (Vers. AU)                                    | 0 = Commande murale<br>1 = Capteur intégré en l'unité<br>2 = Point de consigne courant               |
| <b>dEds</b>                   | Point central de zone morte  | 18 ÷ 30°C  |
| <b>RESET</b>                  | Réinitialiser les paramètres   |  |

# VERROUILLAGE DES TOUCHES

